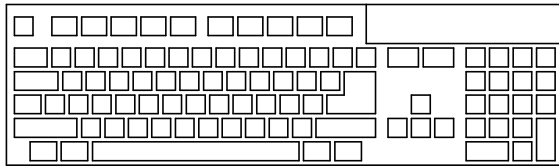
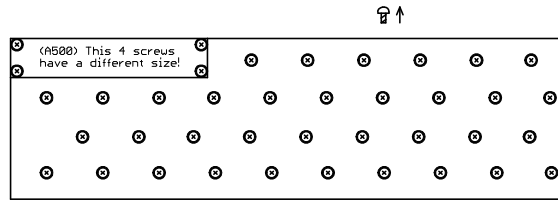


Amiga keyboard hard PCB membrane replacement

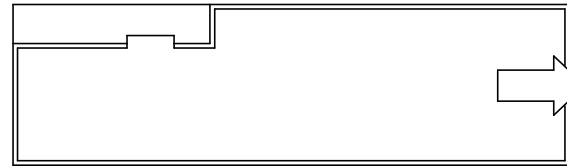
Thank you for purchasing my PCB.
 I hope that the product will meet your expectations and
 your keyboard will gain a new, better life :)



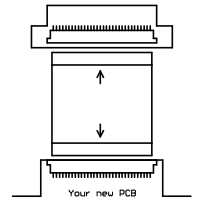
1. Oh no! My keyboard is broken!



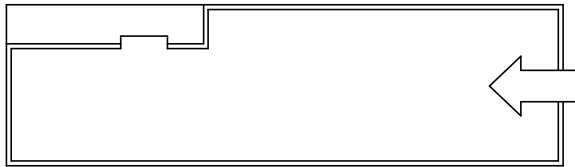
2. Unscrew all screws and open the metal cover.



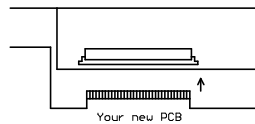
3. Remove old membrane.



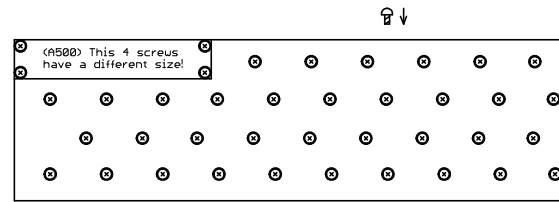
4. (A1200) Connect the FFC cable to the connectors. Blue rectangles must be to the right direction.



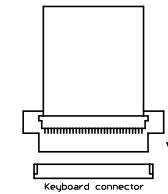
5. Install your new PCB membrane into the Amiga keyboard.



6. (A500) Plug in PCB to socket on keyboard controller.



7. Close the metal cover and tighten the screws.



8. (A1200) Plug in the small PCB to the keyboard socket.

9. HAVE FUN!!!